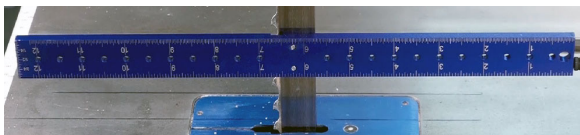


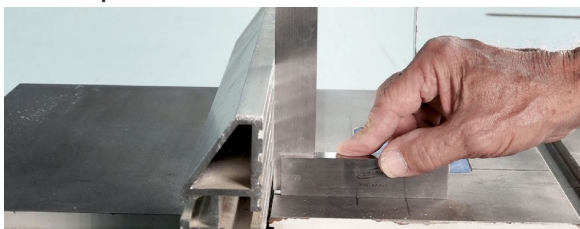
Bandsaw Companion 3-in-1 Tool

Blade Alignment

For a cut to be in-line with the blade, the blade must also be in proper alignment with the table, fence, and miter slot. The companion tool has two magnets on one side that attach to the bandsaw blade. An indent is next to the magnets for the blade set. The extended length of the tool makes it easy to visualize blade alignment.



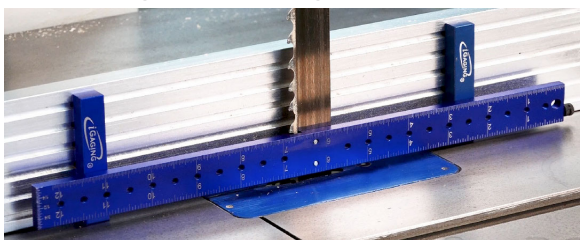
First check that the blade and fence are both square with the table.



With miter gauge set to zero-degrees, check the squareness of miter gauge to the freely suspended tool.

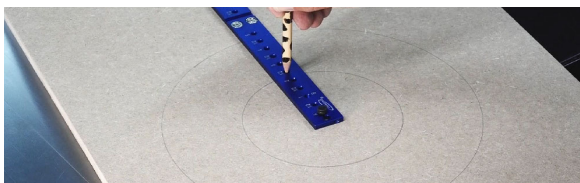


Next, check the parallelism of the fence to the suspended companion tool.



Draw Circle

With center holes spaced every half-inch, draw circle for cutting a bowl blank.



Hook Rule

With the stop attached, use as a hook rule to draw lines parallel to an edge.



